

Leopalace21 allows you to search for rooms around Japan with a computer or smartphone, or even at our local office.

Search for properties around Japan with a computer or smartphone.
Conveniently search for rooms in your desired area, anytime and anywhere.



Leopalace Center
Leopalace Partners



Computer



Smartphone

Leopalace

Search

<https://www.leopalace21.com>



Number of properties
in Japan managed by
Leopalace21

Approx.

560,000

* As of March 2023

Using Leopalace21,
you can do everything without visiting
our office! *1

Room
search

Staff
consultation*1

Room
Viewing*2

Sign the
contract

Key
return and
collection*1

*1: Only for properties managed by Leopalace21

*2: Only at Leopalace21's managed offices (not Partner)

Apply for a lease or sign a lease contract for any Leopalace21 properties in Japan at our offices.

Leopalace21 Corporation

Leasing Business Division: 2-54-11 Honcho, Nakano-ku, Tokyo 164-8622, Japan

Building lots and buildings transaction business license: Minister of Land, Infrastructure and Transport Permit (11) No. 2846

Registered rental housing management operator: Minister of Land, Infrastructure and Transport (02) No. 4651

Contact for customers looking for rooms:



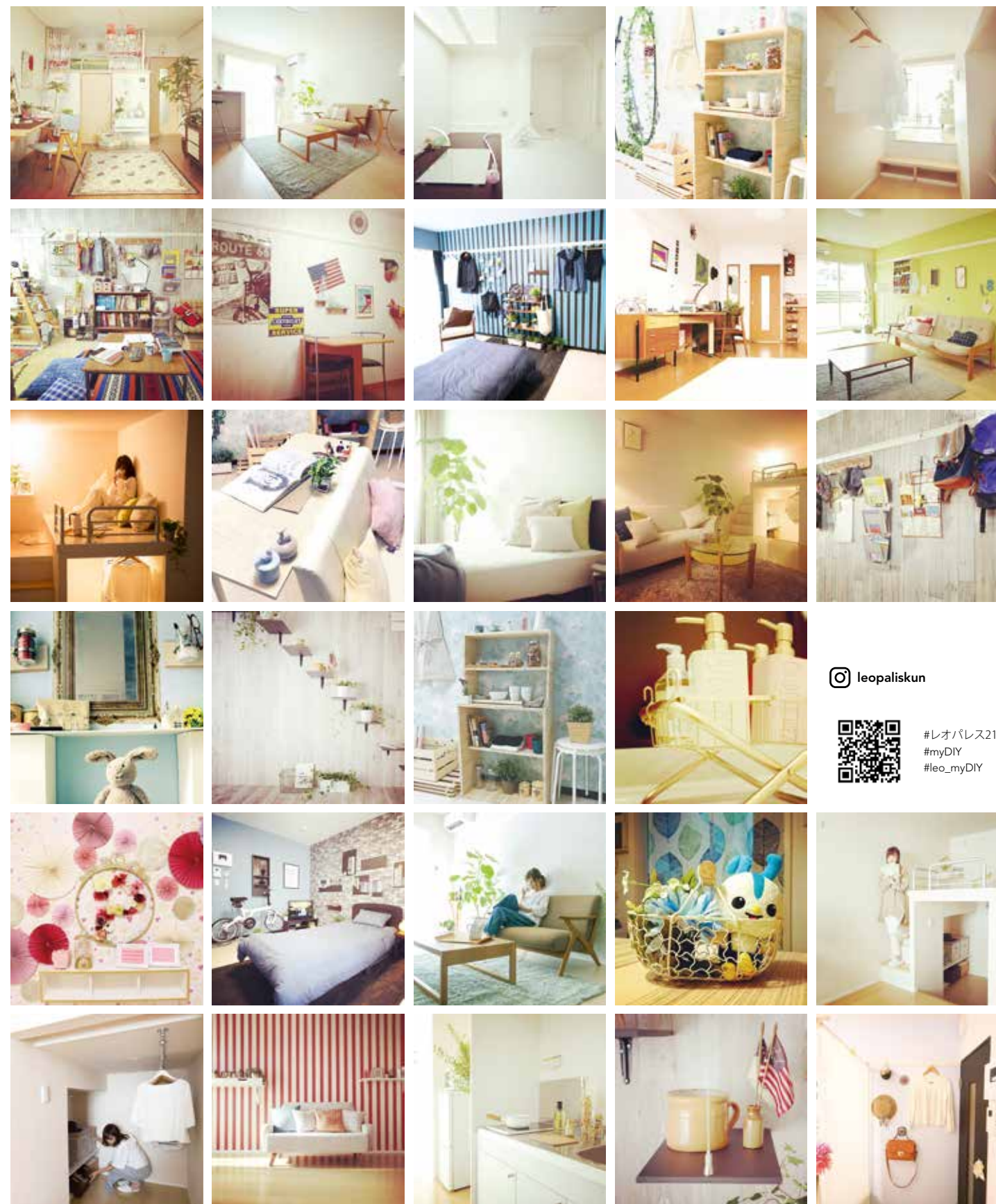
0570-0080-21

(9:00 to 18:00)

2023.4 H-001

* The information in this brochure is as of April 2023 and is subject to change without prior notice.

レオパレス21



leopaliskun



#レオパレス21
#myDIY
#leo_myDIY

This brochure only provides information on properties managed by Leopalace21.

PLAN

Multiple plans available

Q

I am being transferred on short notice and want to rent a room as soon as possible. What do I need?

A

The best feature of Leoplace21 is that we offer Chintai (lease/long term) contracts and monthly contracts. We will help you find a suitable room based on the lease period and purpose of use.

P. 3 to 6



Start a new life with our two leasing options!

For customers who plan to use the property for a long time with monthly payments

Chintai Contract

For customers who plan to use the property for a fixed period of 30 days or longer for purposes such as training, business trips, entrance examinations or studies.

Monthly Contract

LINE UP

Extensive lineup

Q

I am starting a new life. I want to take this opportunity to live in a room that suits my lifestyle. What should I do?

A

Leoplace21 offers an extensive lineup of rooms! Find one that suits your lifestyle!

P. 7 to 10



Choose from an extensive lineup of rooms.

We offer many specifications and properties with different appliances.

Arma-L

L-SEC tion

Dual-L



SERVICE & SUPPORT

A wealth of services and support options

Q

Do services offered to tenants differ by company?

A

It is beneficial to know the content of the services included when renting an apartment. At Leoplace21, we offer a wide range of unique, surprising support options.

P. 12 to 14



Various services available for tenants!

We offer a secure, comfortable life for tenants with various services.

MYDIY

&Leo

LEONET



PLAN

Contract plans

A wealth of plans to choose from, according to your lifestyle.



Find one that suits your needs!

Chintai Contract

Standard leasing plan

- Those who plan to live in the property for an unfixed period that is longer than one year
- Those who want to minimize initial expenses
- Those who want to pay the rent on a monthly basis

This contract plan is recommended for those who will use the property for a year or more.

By paying the rent on a monthly basis, initial expenses are adjusted at the time of the contract.



Gratuity fee 0 to 2 months' rent

For some properties, a gratuity fee equivalent to 0 to 2 months' rent is required.



No deposit



No brokerage commission

Applies only to properties managed by Leopalace21



Utility fees paid separately

Follow the procedures to set up the utilities.



Furnished properties available

Rooms without furniture and home appliances are also available



Renewal fee required

You will be charged a renewal fee of ¥16,500 (including tax) at the time of the contract renewal (every 2 years).



Cleaning fee is included in the contract fee³

Cleaning fee (costs around ¥41,800, including tax) will be included at the time of contract

If you damage the property or equipment intentionally or through negligence, you may be charged a separate repair fee when you move out.

Procedures before moving in

Just three steps to complete the procedures

Step 1
Tenant screening



Step 2
Contract



Step 3
Payment of contract fee

Documents to prepare for tenant screening and contract (typical examples):

Driver's license, passport, health insurance certificate (with a separate face photo), residence card, special permanent resident certificate, cash card from a financial institution (Pay-easy registration), ID or certificate of registered seal (issued within the last three months) of the cosigner

* In the case of a corporate contract, items to prepare somewhat differ from the above. Inquire with us for details.

How to pay:

1. Payment by bank transfer (to a specified account)
2. Payment by credit card (at our office)
3. Payment by J-Debit Card (at our office)

*The second and third method are also accepted at some Partners' offices.

Chintai Contract

See P. 5

Initial expenses	Room rent	Monthly payment	To be paid in full in advance	Room rent
	Gratuity fee	Equivalent to 0 to 2 months' rent	¥0	Gratuity fee
	Deposit	¥0	¥0	Deposit
	Brokerage commission	¥0	¥0	Brokerage commission
	Key exchange fee	¥16,500 (including tax)	¥16,500 (including tax)	Key exchange fee
	Internet	Starting from ¥2,640 (including tax) per month ^{*1}	Not required	Internet
	Guarantee consignment contract	Yes ^{*2}	No	Indemnity agreement
	Cleaning fee (used when moving-out)	Starting from ¥41,800 (including tax) ^{*3} (Basic cleaning fee)	Not required	Cleaning fee (used when moving-out)
	Furniture and home appliances	Yes/No (Depends on the room or property)	Yes (All properties) ^{*4}	Furniture and home appliances
	Utilities	Paid by tenant every month	¥0	Utilities
Initial expenses	Renewal fee	¥16,500 (including tax)	No contract renewal	Renewal fee

Monthly Contract

See P. 6

Monthly Contract

Short-term plan

New plan being prepared

The new plan is being prepared. We will offer information as soon as the details are determined.

- Those who want to rent the room only for a specific period to minimize the cost
- Those who want to use the room economically by paying the rent in full in advance
- Those who want to avoid the hassle of following the procedures for paying utilities

This contract plan is recommended for those who will use the property for a fixed period on business, for a transfer without family, to attend a school or for similar purposes and those who want to avoid purchasing furniture and electric appliances and the hassle of completing procedures, such as those for paying utilities.



No gratuity fee



No deposit



No brokerage commission

Applies only to properties managed by Leopalace21



Utilities are included in the contract price

A simple way to start a new life



Furniture and home appliances as standard equipment

The rooms are furnished and have home appliances.



Wi-Fi

An internet connection is available.

*1: See P. 14 for details including Internet fees.

*2: You will be required to sign a contract with a guarantee company that we specify. See P. 5 for details.

*3: Shown fee is for 1R, 1K, 1SK, and 1DK furnished properties with appliances. Amounts vary according to the floor plan of the room.

In general, cleaning fees must be paid in advance (at the time of signing the contract), instead of upon move out.

*4: Rental futon for one person is also offered in the short-term plan. See P. 6 for details.

MEMO

.....

.....

.....

.....

.....

.....

.....

.....

.....

.....


* The above amounts with "(including tax)" add consumption tax (10%). If the consumption tax rate changes, we will apply the new rate to the amounts.

* The above amounts with "(including tax)" add consumption tax (10%). If the consumption tax rate changes, we will apply the new rate to the amounts.

Chintai Contract

A Chintai contract is recommended for those who plan to live in the property for longer than one year. Because you will pay the rent on a monthly basis, you can minimize initial expenses while starting a new life.


Features of the chintai contract



Long-term occupancy^{*1}


Appropriate for long-term occupancy of over one year

*1: If you move out within one year after the first day of the contract period, you will need to pay a penalty charge equivalent to one month's rent.



Monthly payment of rent

You will pay the rent on a monthly basis.



Rent^{*2}

Total usage fee (rent + administrative fee + community fee) will be automatically deducted from your bank account every month.

*2: A transfer fee will be charged at the time of the bank transfer.



Guarantee consignment contract^{*3, 4}

If you sign the Chintai contract (standard leasing plan) yourself, you will need to sign a guarantee consignment contract with Plaza Guarantee Co., Ltd.

A guarantee consignment contract fee is required for requesting Plaza Guarantee Co., Ltd. to guarantee the debt incurred by the tenant under the lease contract.

*3: At the time of the contract, you are required to pay an initial guarantee consignment contract fee (tax-free) of 100% to 120% of the monthly rent.
*4: After signing the contract, you will be billed an annual guarantee consignment contract fee (tax-free) of ¥5,000 to ¥10,000.

Relocation support service (within Leoplace21 apartments)



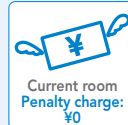
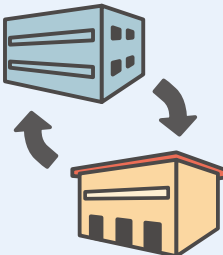
We offer benefits to tenants who need to move and those who use Leoplace21 properties again after moving out.

* Both benefits are unavailable in the case of a corporate contract.

Relocation

Intended for:

People being transferred, changing jobs, entering higher education, beginning a commute to a new campus or otherwise need to move to a new place for work or study


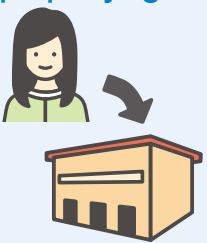


Current room Penalty charge: ¥0
Rent for up to seven days: ¥0
The next room will have Gratuity fee: ¥0

Using a Leoplace21 property again

Intended for:

Those who lived in a Leoplace21 property for a cumulative total of two years or longer



At the time of the next contract Gratuity fee: ¥0

Tenant support services

We provide tenants with a wide range of support services. They include a key exchange service, which puts you at ease if you lose your room key, and a 24 hour medical and health consultation service. Leoplace21 makes a difference in the sense of security felt by tenants.

*1: The New Tenant Insurance Premier L is an insurance product from our partner insurance company, which covers tenants' household goods and others.
*2: For details, see the brochure of the product. The contents of the service are as of April 2023 and is subject to change without prior notice.
*3: Maintenance work requested at night to the following morning (19:00 to 10:00) may be carried out on the following day or thereafter in some cases.
*4: We offer other fire insurance products than the one mentioned in *1. Inquire at our office.

Tenant Support System Plus^{*2}

¥18,975 (including tax) per 2 years
(Contract period: 2 years)

New special insurance for tenants (New Tenant Insurance)^{*1*2}

¥18,000 per 2 years
(Tax-free for the two-year contract period)

Leoplace Service Center^{*3}
We are ready to handle issues 24 hours a day.

Express service at your home^{*3}
Immediate action will be taken in the case of an issue, such as plumbing problems.

Disaster support service
If your room is damaged in a disaster, we will pay the expenses for temporary housing and for moving back in to your Leoplace21 room.

Key exchange service^{*3}
We will replace the key cylinder if you lose your key or a replacement is needed for security reasons.

24 hour medical and health consultation service
We will give you advice or information about hospitals in the case of illness or injury.

* The above amounts with "(including tax)" add consumption tax (10%). If the consumption tax rate changes, we will apply the new rate to the amounts.

Monthly Contract

A monthly contract allows you to set the period of use on a daily basis, with a minimum usage of 30 days, which means you can avoid wasteful spending.

Features of Monthly Contract



Advance payment of full usage fee

Avoid the hassle of having to pay the fee every month.



Utilities are included in the contract price

A simple way to start a new life

Choose from two plans


We offer two options to choose from. The *New Plan* allows you to set your usage period, with a 181-day minimum, and can be extended in one-day increments. The *Short-Term Plan* allows you to use our property for a minimum of 30 days.

Coming Soon...

New plan

being prepared

The new plan is being prepared. We will offer information as soon as the details are determined.



Those who need to use properties for a short period of time

- New working members of society
- People who are transferred without family
- Tourist

If the desired period of use is 30 days or more

Short-Term Plan^{*1}

This plan allows you to use the property for a period of 30 days or longer, which can be extended in one-day increments.

Period of use

30 days or longer

At every property a set of futons is available^{*2}

Internet access

* If you live with a roommate, expenses will be generated separately.
*1: Up to three people, including the contractor can live in a property.
*2: Rental futon for one person is also offered in the short-term plan.
(Procedures for delivery are separately required.)

● **How to use futons**

After your move-in, you will receive them from a delivery service operator. They come with a pay-on-delivery form. When you move out, use the form to send them back to us.

● **Pre-move-in provision and collection option**

It is a pay service costing 11,000 yen, including tax. Under the service, we will place futons in your property, and you do not need to receive futons delivered. This service also frees you from the need to follow the procedures for returning them when you move out. You can move out with the futons remaining in the property.

Delivery date

Date of payment
(Date of contract)

Day 1

Day 2

Day 3

Day 4

Day 5
Can be designated as delivery date

Day 6

Day 7
The pre-move-in provision is available if you move in on this date

No delivery during this period

Tenant support services

We offer a tenant compensation program, which provides total compensation in the event of damage to household goods, an accident or other issues, in addition to maintenance and troubleshooting for room equipment.

Monthly Contract Life Support Service^{*1}

¥3,905 (including tax) per 30 days

The Short-Term Plan includes this service as standard and no extra charge is incurred.

*1: For details, see the brochure of the product. The contents of the service are as of April 2023 and is subject to change without prior notice.
*2: Maintenance work requested at night to the following morning (19:00 to 10:00) may be carried out on the following day or thereafter in some cases.
*3: For the tenant compensation program, we have concluded a special blanket insurance policy with our partner insurance company.

* The above amounts with "(including tax)" add consumption tax (10%). If the consumption tax rate changes, we will apply the new rate to the amounts.

Leoplace Service Center^{*2}
We are ready to handle issues 24 hours a day.

Express service at your home^{*2}
Immediate action will be taken in the case of an issue, such as plumbing problems.

Maintenance service for furniture and home appliances^{*2}
We offer this maintenance service when you have damaged equipment in your room by mistake.

Payment of compensation
We pay compensation in the event of an emergency or disaster.

Key exchange service^{*2}
We will replace the key cylinder if you lose your key or a replacement is needed for security reasons.

24 hour medical and health consultation service
We will give you advice or information about hospitals in the case of illness or injury.

Tenant compensation program^{*3}
We provide total support, ranging from compensation for valuable household goods to compensation in the event of an accident.

LINE UP

Lineup of rooms

Compare and select your favorite room.

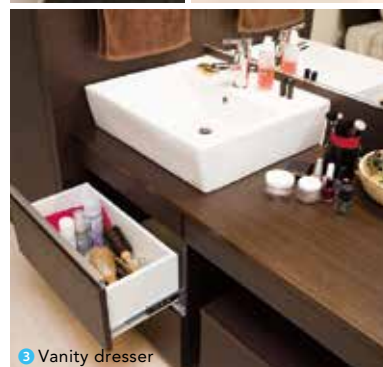
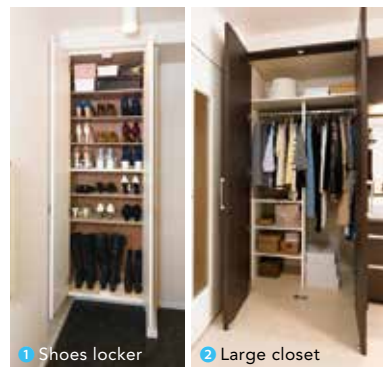
Find the right room for you!



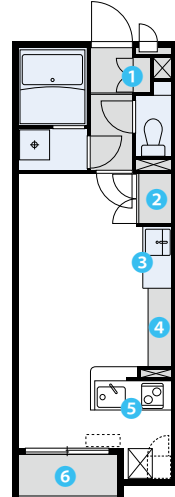
Arma-L

Wooden structure,
steel-frame structure

The standalone vanity in the living room is convenient for applying makeup and skin care. The large closet and other storage spaces boast outstanding capacity, which is good for a tenant with many belongings.



Floor plan example:



- 1 Shoes locker
- 2 Large closet
- 3 Vanity dresser
- 4 Upper part: Wall cabinet
Lower part: TV cabinet
- 5 Open kitchen with a counter
- 6 Inner balcony

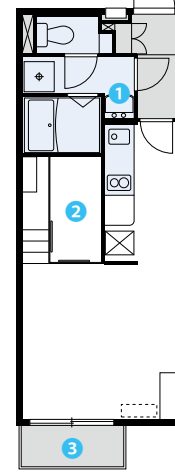
L-SECTion

Wooden structure,
steel-frame structure

The bunk bed conveniently allows you to store many goods below in the spacious closet. We adopt the high-position balcony for protecting your privacy and ensuring a higher level of security.



Floor plan example:
* First floor



- 1 Standalone vanity
- 2 Upper part: Bunk bed
Lower part: Closet
- 3 High-position balcony
(First floor only)

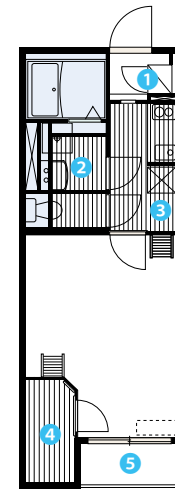
Dual-L

Wooden structure,
steel-frame structure

The two lofts enable efficient use of the living space, making the apartment virtually wider than the occupation area.



Floor plan example:



- 1 Shoes locker
- 2 Standalone vanity
- 3 Loft 1
- 4 Loft 2
- 5 Inner balcony

* The room shown in the photo and the floor plan are inversed.



LINE UP

Non-sound system

Added value that provides comfort and peace of mind

A structure devised to ensure silence in the living space

The Leoplace21 non-sound system is the latest creative measure for solving noise concerns.

Sound-insulating walls

We have improved the sound insulation of the walls between adjacent apartments by changing their structure. This has resulted in a sound insulation level of TLD-45 for wooden structures and TLD-50 for steel-frame structures.

Steel-frame structure

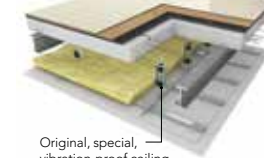


* This system is being introduced to newly-built properties sequentially.
* Sensitivity to sound and noise differs among individuals.

Non-sound floor

This floor reduces the impact sound transmitted from the upper floor to the lower floor. This improves the sound insulation by one grade from conventional floors for wooden structures and by three grades for steel-frame structures.

Steel-frame structure



Original, special, vibration-proof ceiling hanger with high viscosity

Sound-insulating drainpipes

The use of sound-insulating drainpipes reduces drainage noise by 15dB on average compared to conventional VU pipes. This makes the room as silent as a library or the suburbs at midnight.



PROFEED

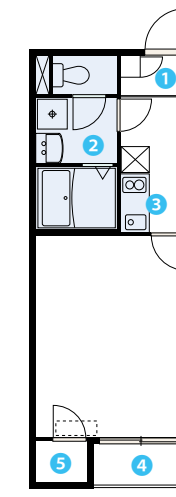
Wooden structure, steel-frame structure,
RC structure

CLEIND

We conducted exhaustive market research and reflected the opinions of tenants in these rooms. While they are simple, they feature a user-friendly vanity and kitchen.

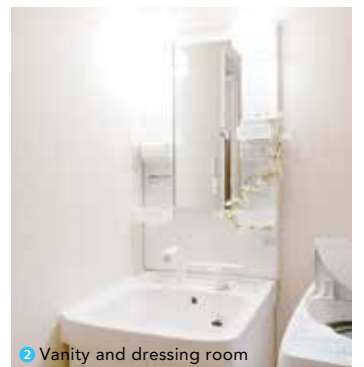


Floor plan example:



- 1 Shoes locker and entrance
- 2 Vanity and undressing room
- 3 Kitchen
- 4 Inner balcony
- 5 Closet

* The room shown in the photo and the floor plan are inversed.

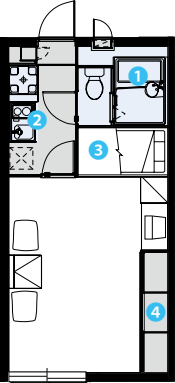


HYBRID Lightweight, robust steel is used for structural members. They are resistant to earthquakes and other disasters and block ambient noise, making the internal space silent.

Steel house



Floor plan example:



- 1 Modular bathroom
- 2 Kitchen
- 3 Bed with storage
- 4 Closet

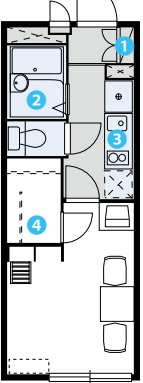


VILLA ALTA The large storage area under the bed saves you a lot of space.

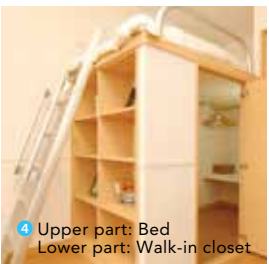
Steel-frame structure



Floor plan example:



- 1 Shoes locker
- 2 Modular bathroom
- 3 Kitchen
- 4 Upper part: Bed
Lower part: Walk-in closet



* The floor plan example is not one of the rooms in the photo.

LAVO SPERANZA Each residential unit has an exclusive entrance on the first floor, with no shared corridor or staircase.

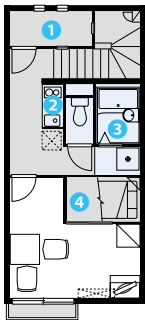
Wooden structure



Floor plan example:
(First floor)



Floor plan example:
(Second floor)



- 1 Large storage
- 2 Kitchen
- 3 Modular bathroom
- 4 Bed with storage

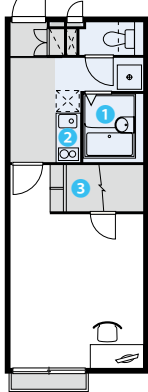
- 1 Modular bathroom
- 2 Kitchen
- 3 Upper part: Bed
Lower part: Walk-in closet

LEPIDO These rooms feature a simple design with a large storage space under the bed.

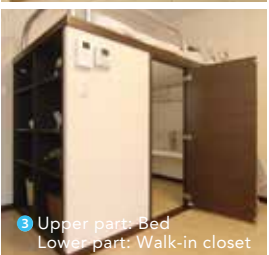
Wooden structure, steel-frame structure, steel house



Floor plan example:



- 1 Modular bathroom
- 2 Kitchen
- 3 Upper part: Bed
Lower part: Walk-in closet



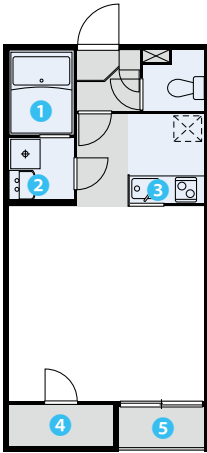
LEOCOMFORT

Wooden structure, steel-frame structure

Enjoy a good-sized kitchen and a walk-in closet with large capacity.



Floor plan example:



- 1 Modular bathroom
- 2 Stand-alone vanity
- 3 Open kitchen
- 4 Walk-in closet
- 5 Inner balcony

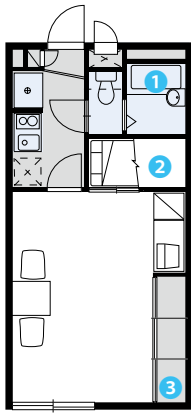
CON-GRAZIA

Wooden structure, steel-frame structure

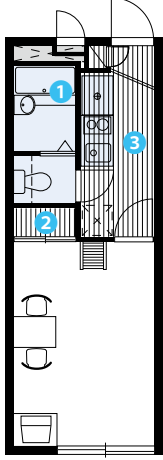
Con Grazia features two convenient floor plans. One highlights storage under the bed. The other features a space-saving loft.



Floor plan example:
(Plan with a storage area under the bed)



Floor plan example:
(Plan with a loft)



- 1 Modular bathroom
- 2 Closet
- 3 Loft

- 1 Modular bathroom
- 2 Bed with storage
- 3 Closet

Other major equipment

Standard appliances in each apartment include the following.



* Equipment differs among types of property

Cutting-edge equipment

Leo Remocon

It allows you to control home appliances with your smartphone or tablet. In addition, you can also control your own home appliances.
* Available in some properties



Leo Lock

It is a smart lock system that allows you to lock and unlock the door with your smartphone or IC card. The app allows you to check whether your room is locked or unlocked. You can also lock the door remotely.
* Available in some properties



Furniture and home appliances

The rooms are furnished and have home appliances, which mean hassle-free moving. Quickly start a new life while holding down initial expenses.



TV



Curtains



Table

* Equipment may differ among types of property



Air conditioner



Washing machine



Refrigerator



Microwave

* Specifications of equipment may differ among properties.

Smart Lock

You can unlock it with a smartphone app or with a PIN number. You do not need to carry a physical key. * Installation varies with the property.



With an app



With a PIN number



With a smartcard



Security

Ample security equipment gives a sense of security to women and those who are living alone for the first time.



Auto-lock gate

Our properties are equipped with an auto-lock gate and an intercom with a monitor.



Security camera

The security camera installed on the premises monitors and records trespassers and suspicious people.



Intercom with monitor

Allows you to check the identity of the visitor.



Lock

Resistant to picking and difficult to break.



Security glass (first floor)

Prevents the intrusion of thieves and other trespassers.

* Installed security equipment may differ by property.

SERVICE & SUPPORT

Services for a comfortable life

Services for ensuring the comfortable life of tenants

Keeping you secure both before and after moving into the apartment.



Antibacterial protection

We sanitize the entire room before your move-in.

We apply antibacterial protection to each corner of the room, from the back of the closet to the bed.

Thus, we help you start a new life comfortably.

Antibacterial protection



At least
¥18,040
(including tax)

We use an antibacterial agent whose main component is a plant extract that is friendly to body. It fills the room with a comfortable scent, making you feel fresh.

* ¥23,540 (including tax) for an apartment that is 1LDK or has more rooms and is 40 m² or wider

Antibacterial agent + Photo catalyst



At least
¥23,760
(including tax)

Furniture, interior materials and other parts of the room are coated with a photo catalyst that generates energy when exposed to light. It makes the interior environment comfortable by producing many effects, including air-purifying, deodorizing, antibacterial and antivirus effects, preventing sick house syndrome.

* ¥34,870 (including tax) for an apartment that is 1LDK or has more rooms and is 40 m² or wider.

Sales of goods

We also offer a full set of daily necessities.

When concluding the contract, you can purchase a wide range of goods, including a set of daily necessities, futon set, clothesline and even home appliances.

Inquire with our staff about details.

We also offer a service for delivering purchased goods to your room (paid service).



THE SECOND AID a disaster supply kit



A set of equipment to help you begin your life in your new home.



A four-piece set of hotel-quality towels



Far-infrared futon a seven-piece set



Clothesline pole



Electric kettle

* Some properties are incompatible with some of the goods, including clothesline. Check the presence or absence of places to install the goods, their widths and other specifications for the property that you will lease.

* Note that the product lineup is subject to change without prior notice.

L-Club Off

Exclusive complimentary services for Leopalace21 tenants (Monthly fee: ¥550 (including tax))*

We offer exclusive complimentary services for Leopalace21 tenants. They allow our tenants to use popular hotels, renowned inns, leisure facilities, restaurants and other facilities at attractive discounted rates. These services are available at more than 200,000 facilities in Japan and overseas.



Up to an 80% discount at approx. 22,000 hotels and inns in Japan

Enjoy popular restaurants at famous hotels and luxury dining experiences at **special discounted rates for members.**

Up to a 50% discount offered at more than 40,000 restaurants, delivery pizza restaurants and other food services!



Special discounted rates for members offered at sports facilities and sports clubs all over Japan



Special discounted rates for members offered at approx. 300 cinemas



Up to a 65% discount offered at approx. 1,000 amusement parks and theme parks across Japan!



Up to a 55% discount offered for using car rental services all over Japan!



Special discounted rates for members offered at esthetic salons all over Japan, including ones in hotels

* All the images are for presentation purposes only.
* The information provided in this section is as of April 2023. Note that the content of the services is subject to change.
* The monthly fee of ¥550 (including tax) applies to tenants under the standard leasing plan. A daily fee of ¥22 (including tax) applies to those under the Short-Term Plan.

* The above amounts with "(including tax)" add consumption tax (10%). If the consumption tax rate changes, we will apply the new rate to the amounts.

Learn more about
L-Club Off here.
* Login is required to view some pages.



SERVICE&SUPPORT

Replace wallpaper for free.

myDIY tryDIY

Offered for **our** properties for rent.

Paid options are also recommended.

1. Make the room better suit your taste.

Wallpaper in two different patterns ¥5,500 (including tax)

This option allows you to combine wallpaper in two different patterns to make the room better suit your taste.



2. If changing the wallpaper on only one wall is not enough

Wallpaper replacement/addition service ¥48,400 to 137,940 (including tax)

Choose your favorite wallpaper for the toilet, four walls of the room, and the ceiling. An additional ¥2,200 (including tax) is required to change the type of wallpaper.

Learn more about myDIY on the website.



myDIY

We will change the wallpaper on one wall of the room that you will move into, free of charge.

Replace the wallpaper by choosing your favorite from about 100 options in different patterns. This means you can design the interior to suit your taste although the room is leased.



tryDIY

You can affix wall stickers on the wallpaper changed with myDIY. You can also paint it or put a shelf on it. You do not need to restore it to its original state when moving out.

Affix wall stickers!



Paint it!



Add a shelf!



*The photos are for illustrative purposes only. Some wallpaper designs may no longer be available. Inquire about the details at our office.
*The above amounts with "(including tax)" add consumption tax (10%). If the consumption tax rate changes, we will apply the new rate to the amounts.
*You must fulfill the prescribed conditions to use myDIY. Inquire with us for details.

&Leo

Live with &Leo.

&Leo is an exclusive application for tenants. It makes your everyday life more convenient and enjoyable with good deals.



Residence

Check/change registered information

Simply log in to the app to check the lease contract information or follow the procedures to change registered information.

Notification of parts that were confirmed to be damaged at the time of move-in

The app allows you to easily report scratches, smears, and other forms of damage to the apartment before you moved in.

Garbage collection information

Do you wonder about the days of the week on which combustible garbage, incombustible garbage and recyclable waste are collected? Use the app to check the garbage collection days for your neighborhood.

Chat support

Use our chat support feature to help resolve issues. Our AI answers questions you may have about rooms or LEONET.



Special benefits for tenants

LEONET provides exclusive services for tenants, including L-Club Off, various discount programs, campaign information, and recommended services.

* Note that benefits may change or be terminated without prior notice.



Disaster control

Disaster information

The app lets you view local evacuation information, weather warnings and other information useful for disaster control in the region you set.

Notification to family

The app quickly sends out your safety information, your whereabouts and other information in the event of a disaster.

Property damage

In the event of damage to the building, you can contact us through the app.



LEONET

Content that brings enjoyment every day

The app offers content exclusively for residents. They can enter prize draws.

Exclusive campaigns for tenants

Residents can apply for special campaigns such as present campaigns to win luxurious prizes, which are exclusive to residents.

Questions about LEONET

Watch videos or view the Q&A page to see how to connect Life Stick and how to subscribe to the service.

Subscription to the Internet plan

You can easily subscribe or unsubscribe to the Internet plan.

* This app is available on Android only. On iOS, go to the dedicated website.

Install &Leo here.



* The contents are subject to change without prior notice. * Some contents include paid services.



LEONET

LEONET is a network service for tenants.

Enjoy a comfortable life with a wide range of content.



Service content

Connect Life Stick, a dedicated terminal for LEONET, to your TV to enjoy a wide range of entertainment options.

LEONET is full of apps and services for enjoying life. Use Life Stick for free.



INTERNET

Subscribe to the Internet plan (a paid service) to use the Internet (Wi-Fi). More affordable plans, which include streaming services, are available.



Magazine

U-NEXT

Subscribe to the Internet plan for unlimited streaming/magazine services of more than 260,000 movie titles and 170 magazines! *1



&Leo

Quickly check essential information for everyday life, including neighborhood information, such as information about garbage collection days, and information about your apartment or contract.



Shopping

The specialty shop offers products carefully selected from among the lineups of popular manufacturers. The service can be used through your Life Stick terminal, or on your personal computer or smartphone.

*1: You need to subscribe to the basic plan or the standard plan to use unlimited streaming/magazine services of U-NEXT's movie titles and magazines.
* The information is subject to change without prior notice.
* It may not be possible to view the videos on a computer, smartphone or tablet due to the OS or other conditions.

Internet plan

Basic Plan

Monthly fee: ¥3,630 (including tax)

Great savings on both Internet and entertainment! Leopalace's Basic Plan.

INTERNET



Unlimited Internet access (Wi-Fi connection available)

U-NEXT



Unlimited movie streaming & Unlimited magazine access*1

Reliable Setup Support



Consult with our specialized staff*2

Recommended

*The Light Plan (with a monthly fee of ¥2,640 (including tax)) is available only when you sign a contract for the property.

Detailed information about LEONET is available on the website or in the brochure.



*1: Use the unlimited magazine service through your smartphone or personal computer. Comics and light novels are not included in the unlimited reading service.
*2: Consult with our specialized staff by telephone on issues related to setting up a computer, smartphone or other equipment (printer, game console and others).
* Use the Internet for free if you subscribe to an ADSL or ISDN service.
* LEONET is a best-effort service. Transmission speed may be slower while using the Internet or in other circumstances, according to your environment or the time of day.
* The Internet Plans available and their fees vary depending on the method of signing a contract for the property. For details, please ask us at the time of signing a contract.

* All the information in this brochure is correct as April 2023. The contents are subject to change without prior notice.

* Some contents include paid services.

* The above amounts with "(including tax)" add consumption tax (10%). If the consumption tax rate changes, we will apply the new rate to the amounts.

* Indoor ornaments and other interior items in the photos are for illustrative purposes only.

* The floor plans and equipment are typical examples. Note that actual floor plans and equipment differ among properties.